

# HYDRA TARP™

---

## SERIES 2000



# KEY FEATURES:

Superior Mesh Tarp

Hydraulic Components  
are Rated at 3000 PSI

Operated with Handheld  
Wireless Remote

Internal and External  
Isolation Button

Lockable Water  
Resistant Box

Wiring and Proximity  
Switch

Wiring Harness for Beacons  
and Light Bars

All parts are CNC-cut  
and Pressed in-house

Burst Check Valve

Bolt-on Mounting Plate



# FABRICATION

---

At the heart of our business is a deep commitment to quality, precision, and Australian craftsmanship.

Proudly Australian-owned and made, the HT2000 is engineered using advanced 3D CAD modelling, state of the art laser cutting, and CNC press brake technology. This ensures the exceptional standard of finish and reliability that our brand is known for.

Every HT2000 we manufacture reflects the pride we take in our name because to us, our product and our reputation means everything.





# SUPERIOR MESH TARP

---

The system includes a virtually untearable superior mesh tarp (9 meters) with enveloped sides and two tie-downs on each side at 2-meter intervals. The usable length of the tarp is 7 meters, providing increased strength with a 2-meter reserve on the barrel.



*We also offer custom company branding on the tarp's end flap for customer's added exposure.*

# STANDARD SAFETY FEATURES

---

The system is equipped with a **lockable, water-resistant enclosure** that houses all electrical and hydraulic controls. It features **manual overrides** and a **pressure relief valve** that prevents operation in the event of misuse. It also has an **isolation button** that serves as a circuit break to prevent accidental activation when the remote is stored in the operator's pocket.

Cylinder are fitted with **anti-burst check valves** to prevent collapse in case of hydraulic hose failure. The **remote control** system powers down after three minutes of inactivity as a safety feature to prevent accidental operation of the tarp.





## OPERATING CONTROLS

---

The system is operated by a hand held remote control. The unit is also fitted with manual overrides contained within the water resistant control box.

The system can be powered on and off using the remote. The remote will also power down the system after 3 minutes of inactivity.

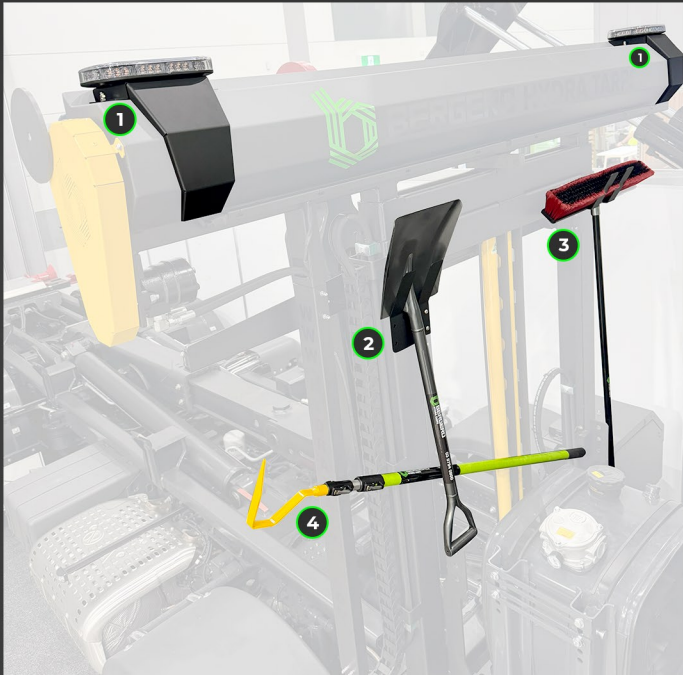
This system complies to AS/AZS 4268: 2017.

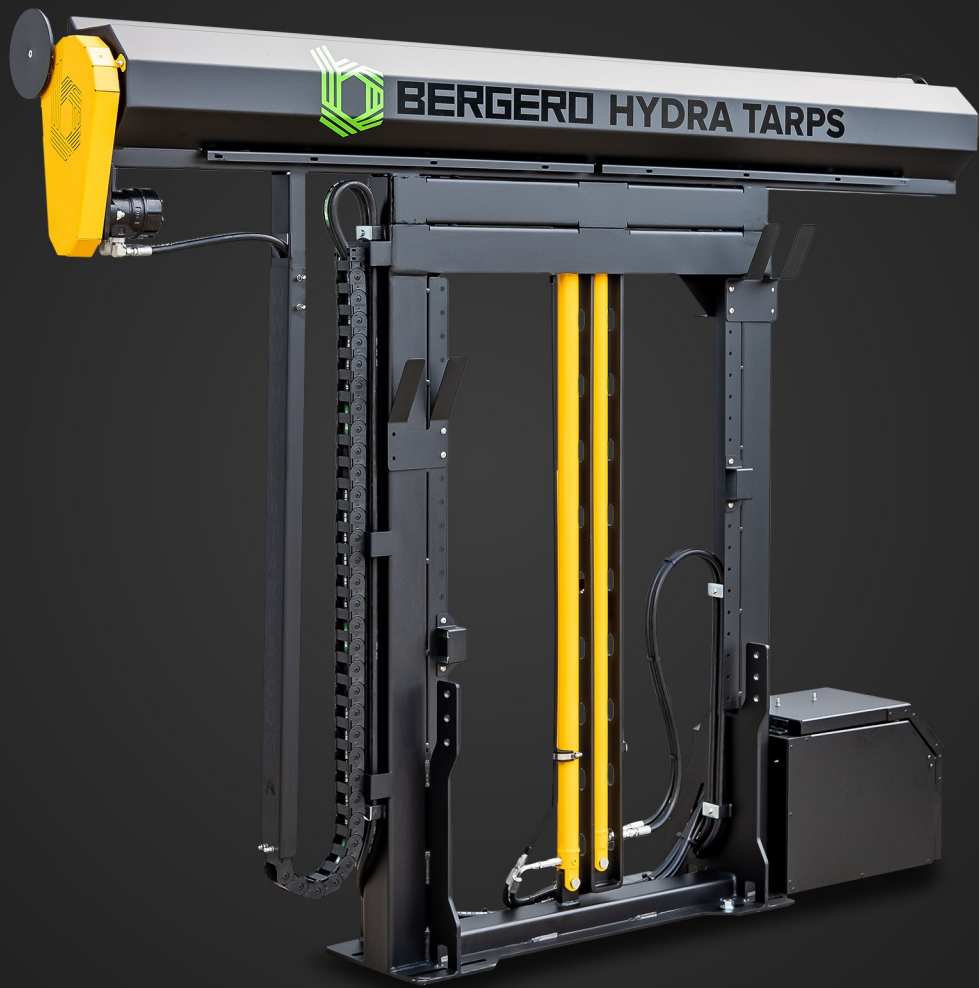


# ACCESSORIES PACK

For enhanced safety and convenience, you may choose to equip your Hydra Tarp with our optional Accessories Pack, which includes:

- (1) Beacons
- (2) Shovel
- (3) Broom
- (4) Extension Pole and Pick
- (5) Light Bar
- (6) Hydraulic Tank Mounting System *(sold separately)*





## Technical Parameters

## Specs

Width	2500 mm
Weight	365kg
Height (Closed)	1955 mm
Height (Open)	4338 mm
Depth	400 mm
Ram Travel	1219 mm ea x 2 (2438 mm)
Max working pressure of hydraulic system	Rated at 900 PSI
All hydraulic components and hydraulic hose	Rated at 3000 PSI

## Ratings

## Specs

Power Ratings	12 volt or 24 volt
Remote Control Freq.	Within 433 Mhz Range
All welds	AS1554





# BERGERO

HYDRA TARPS



info@hydratarps.com.au



+61 3 9794 0900



www.hydratarps.com.au



45 Frankston Gardens Dr,  
Carrum Downs, 3201 Victoria, Australia



© Copyright 2016 Bergero Hydra Tarps™ | All Rights Reserved