

HYDRA TARP™

SERIES 2000

User Manual



Index

System Description and Key Features	3
Specifications	4
Operating Controls	6
Standard Safety Features	7
Operating Procedures - Tarping a Bin	8
Operating Procedures - Untarping a Bin	9
Installation Instructions	10
Maintenance Procedures	11
Troubleshooting	12
Pairing Transmitter and Receiver	13

System Description

The **Hydra Tarp Series 2000** is a cordless, remote-controlled hydraulic tarping system designed for 12 or 24-volt waste trucks. It is installed behind the cab of trucks that use a hook lift system.

This system enables operators to safely and efficiently cover bulk container loads from ground level, eliminating the risks associated with manual tarping.

It is suitable for containers up to 40.0 cubic metres in size.



Key Features



Technical Parameters	Specs (Metric)	Specs (Imperial)
Width	2500 mm	98.4 in
Weight	365kg	805 lbs
Height (Closed)	1955 mm	77 in
Height (Open)	4338 mm	170.8 in
Depth	400 mm	15.8 in
Ram Travel	1219 mm ea x 2 (2438 mm)	48 in ea x2 (96 in)
Max working pressure of hydraulic system	Rated at 900 PSI	Rated at 900 PSI
All hydraulic components and hydraulic hose	Rated at 3000 PSI	Rated at 3,000 PSI

Ratings	Specs
Power Ratings	12 volt or 24 volt
Remote Control Freq.	Within 433 Mhz Range
All welds	AS1554

Handheld Remote



- 1** - Up – Raises the tarp
- 2** - Out – Extends the mesh tarp
- 5** - Down – Lowers the tarp
- 6** - In – Retracts the mesh tarp



- A + B** - Press both to activate the remote
- A** - Turns light bar on/off (if equipped)
- B** - Turns beacon on/off (if equipped)
- STOP** - Powers off the system completely

LIGHT INDICATORS



RED

No power or
remote disconnected



GREEN

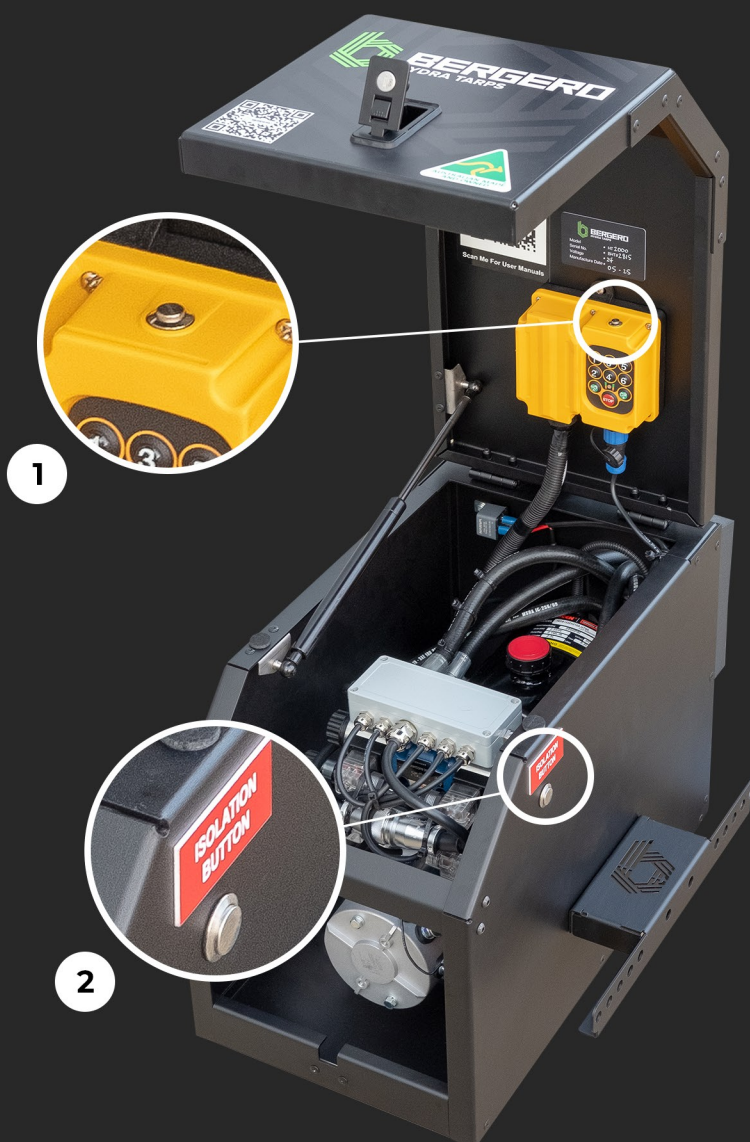
Power on, remote
connected and ready

Isolation Button

1 - Internal Isolation Button

2 - External Isolation Button

The Isolation Button acts as an additional safety feature, functioning as a circuit break to prevent accidental activation.



1. Hydraulic cylinders are fitted with anti-burst check valves, which prevents the telescopic stages from dropping in the event of a hose bursting.
2. Hydraulic and wireless control systems are fitted with manual overrides.
3. An isolation button is fitted to prevent unintentional remote use.
4. A 250 amp resettable circuit breaker is installed or provided to prevent electrical component damage.
5. All electrical and hydraulic controls are housed in a lockable, water-resistant box. No other product or material may be placed inside this box at any time.
6. Caution stickers are affixed to the system providing instruction on hazard avoidance.

Recommended Optional Safety Features

1. "Tarp Up" warning label and LED lamp, which should be installed in the vehicle cabin and connected to the provided proximity sensor.
2. Connecting relay to PTO switch to ensure tarp operation cannot be undertaken without vehicle being in PTO operation.

To be used by trained personnel only

Tarping a Bin

1. Turn the PTO on (if PTO switch is installed).
2. Uncoil the rope from its secured position.
3. Ensure the **Isolation Button** has been pressed.
4. Turn the remote control on by pressing **A and B** simultaneously within 30 seconds of pressing the isolation button. The LED above the Red STOP button should flash **GREEN**.
5. Press & hold **Button 1** to raise the system to its full extent, release button.
6. Walk along the passenger side of the truck and flick the rope over the front left and rear left corners of the bin.
7. With the rope centrally located over the rear of the bin, press & hold **Button 2** to release the tarp, guide the tarp out until the draw bar is sitting above the rear door and the triangular flap is over the rear of the bin.
8. Attach the tarp draw rope to a secure location on the rear door.
9. Press and hold **Button 5** to lower the tarp to the stowed position.

NOTE: The system must be in the fully stowed position during any form of travel.

10. Press **Button 6** to retract the tarp until taut across the length of the bin.
11. Secure ropes to the sides of the bin.
12. Press **STOP** Button on remote and turn PTO Off (if PTO Switch is installed).

To be used by trained personnel only

Untarping a Bin

(Follow steps 1-4 in Tarping a Bin)

1. Press **Button 2** to release tension on the tarp.
2. Untie all side ropes.
3. Press and hold **Button 1** to raise the system to its full extent while unrolling the tarp.
4. Untie rope from the rear of bin (if not already done).
5. Press **Button 6** to retract the tarp while holding the tarp draw rope and guiding the tarp into the top shroud.
6. Press & hold **Button 5** to completely lower the system.
7. Coil the rope and secure to the hooks provided.
8. Press **STOP** Button on remote and turn PTO Off (if PTO Switch is installed).

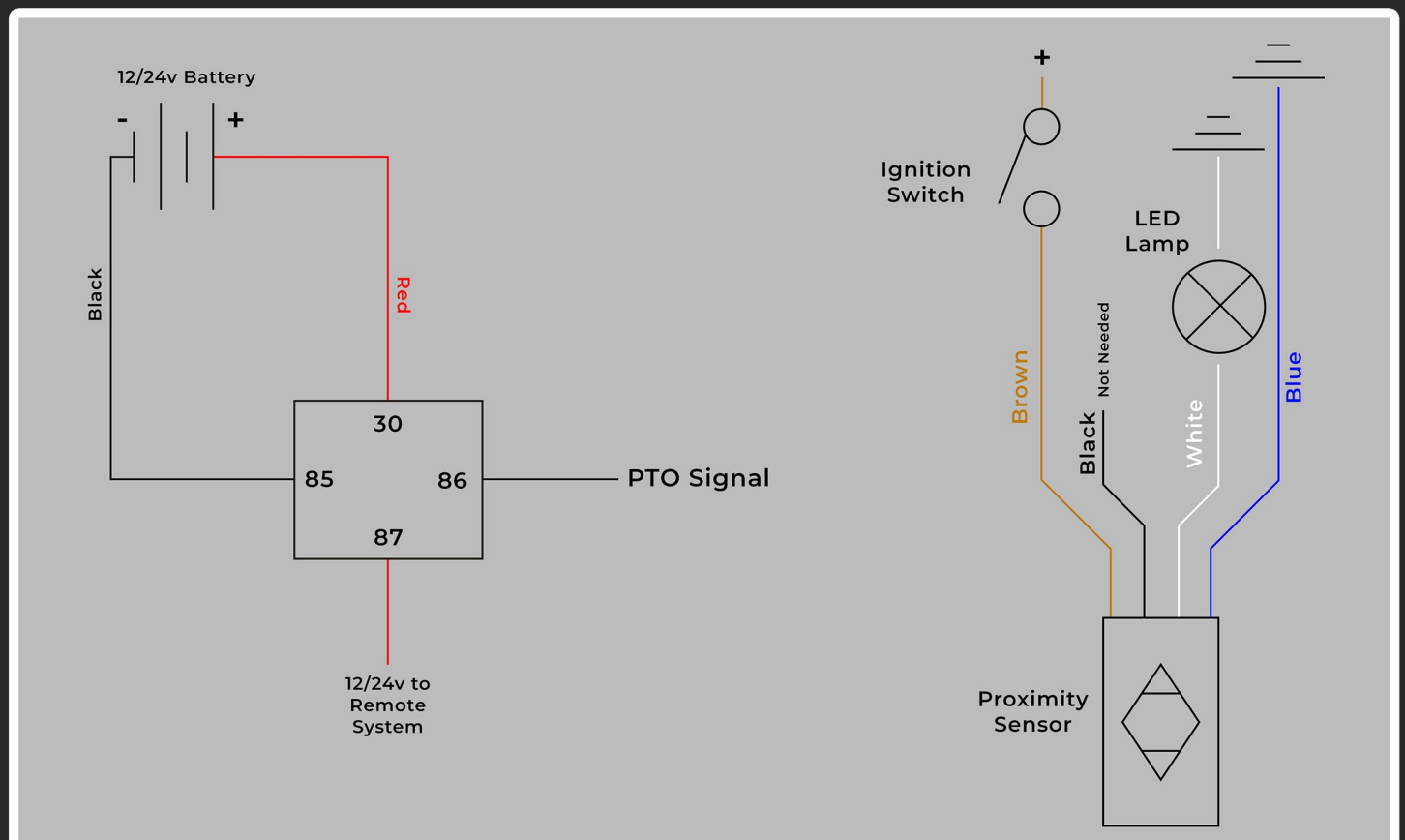
NOTE: On windy days, always face the truck into the wind to minimise the risk of the tarp being blown off the bin during retraction.

1. Chassis mounting must be carried out in accordance with an engineer's specifications to ensure VASS certification upon completion.
2. We recommend connecting our system to the truck's PTO electrical circuit in accordance with the truck manufacturer's specifications. This allows the system to automatically power on and off when the PTO is engaged or disengaged.
3. The hydraulic power pack should be connected to the battery using the supplied 175A Anderson connector. A 250amp resettable circuit breaker must be installed on the positive line, as close to the battery as practicable.

Recommend Being Included In General Truck Maintenance Schedule

- Check oil levels
- Grease legs
- Check Cab Light and Proximity Sensor Operation
- Check ropes are undamaged
- Check hoses for leaks
- Check welds for cracks
- We recommend the lock on the box to be used, ensuring access to the hydraulic motor, valve, and remote receiver by authorised persons only.

WIRING DIAGRAM:



Fault	Possible Cause	Remedy
Remote control not working	<p>Handheld remote battery flat</p> <p>Remote control will not work if you are standing too close to receiver.</p> <p>Isolation system has not been disengaged</p>	<p>Replace the 2 x AA batteries</p> <p>Stand at least 2 metres away from the receiver box</p> <p>Ensure A + B buttons on the remote are pressed within 30 seconds of pressing</p>
Hydraulic cylinders won't retract	Hydraulic pressure is too high	<p>Back off the manual relief valve located on the power pack. If the issue persists, remove the cover nut and loosen the lock nut. Remove the rubber grommet on the control box and insert a flathead screwdriver onto the adjustment nut. Unscrew $\frac{1}{4}$ turn counter-clockwise or until the tarp starts to lower. Tighten the lock nut once the desired adjustment has been achieved.</p>

Attention:

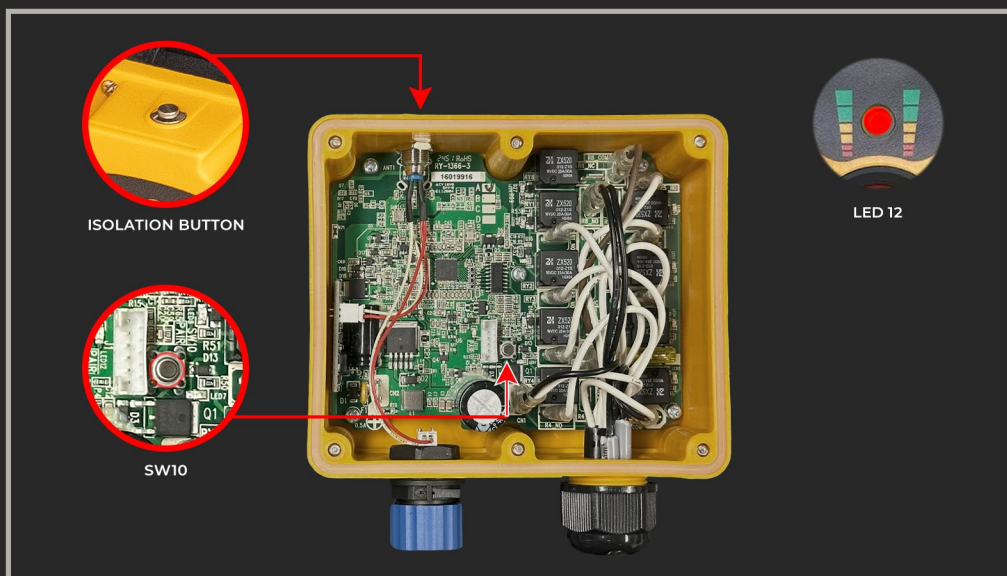
1. Before carrying out the pairing processes, ensure both the **transmitter** and **receiver** are **SWITCHED OFF**.
2. If the entire pairing process is not completed within 30 seconds, it will terminate automatically.

Through the following steps, any SAGA1-V6 transmitter and receiver can be paired to work together as a group:

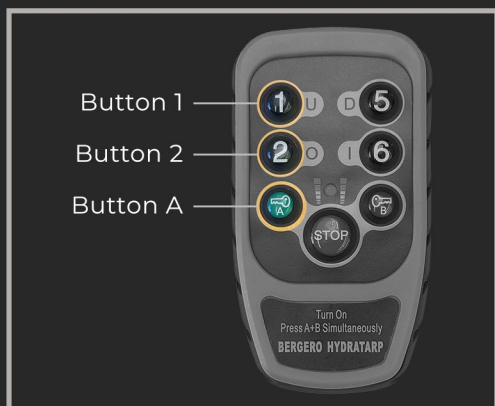
1. Before starting the pairing process, ensure the tarp system is fully powered and operational. Complete any required setup steps specific to your installation before proceeding.
2. Remove the receiver's upper casing by unscrewing the 6 screws.



3. Press the **isolation button** (if equipped), then press and hold **SW10** (on the receiver) for 3 seconds. **LED** will flash **Red** continuously.



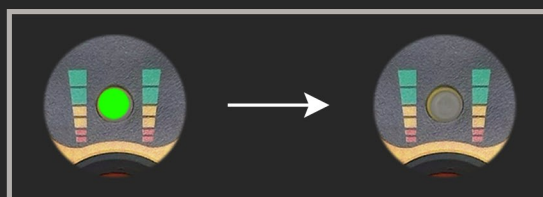
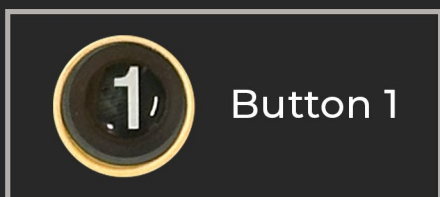
3. On the transmitter, press and hold **Buttons 1 & 2** for 3 seconds. While holding them, press **Button A**.



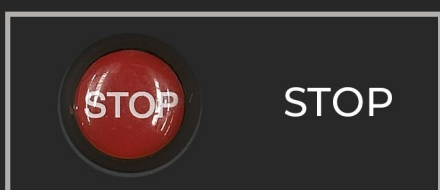
4. The **LED indicator** on transmitter will flash **Green and Red**.



5. Press "**Button 1**" on the transmitter to confirm pairing processes. This stores the receiver's ID code/function settings into the transmitter (overwriting any existing ones). The transmitter's **LED** will flash **Green** slowly and then turn off—indicating that the pairing is complete.



6. Press "**STOP**" to complete the pairing process. To begin operating the unit, proceed to **pages 8 and 9**.



Note:

When assembling the SAGA1-V6 Receiver's upper & bottom casings, please ensure that the pressure balance air bag is not squeezed or being compressed by any wires.



BERGERO
HYDRA TARPS



info@hydratarps.com.au



+61 3 9794 0900



www.hydratarps.com.au



45 Frankston Gardens Dr,
Carrum Downs, 3201 VIC, AUS

